



**Automatización Eléctrica**  
Especialistas en Automatización

At the end of this document you will find links to products related to this catalog. You can go directly to our shop by clicking [HERE](#). [HERE](#)

## Panel feed-through terminal block - VDFK 6 - 0711027

Please be informed that the data shown in this PDF Document is generated from our Online Catalog. Please find the complete data in the user's documentation. Our General Terms of Use for Downloads are valid (<http://phoenixcontact.com/download>)



Panel feed-through terminal block, Connection method: Screw connection, Solder connection, Load current : 57 A, Cross section: 0.2 mm<sup>2</sup> - 10 mm<sup>2</sup>, AWG 24 - 8, Connection direction of the conductor to plug-in direction: 0 °, Width: 10 mm, Color: gray

### Why buy this product

- Easy fixing using plastic knurled nut or quick mounting wedge
- Touch-proof insulating housing
- Terminal blocks can be grouped
- Strain relief can be snapped on as an option
- Universal screw connection with screw locking
- Spacer plates increase clearances and creepage distances

### Key Commercial Data

Packing unit	50 STK
GTIN	 4 017918 005351

### Technical data

#### General

Number of levels	1
Number of connections	2
Nominal cross section	6 mm <sup>2</sup>
Color	gray
Insulating material	PA
Flammability rating according to UL 94	V0
Rated surge voltage	6 kV
Degree of pollution	3
Overvoltage category	III
Insulating material group	I
Connection in acc. with standard	IEC 60947-7-1
Nominal current I <sub>N</sub>	41 A
Maximum load current	57 A
Nominal voltage U <sub>N</sub>	500 V
Open side panel	No

# Panel feed-through terminal block - VDFK 6 - 0711027

## Technical data

### General

Number of positions	1
---------------------	---

### Dimensions

Width	10 mm
Length	30.2 mm
Plate thickness	1 mm ... 4 mm

### Connection data

Connection side	Outside
Connection method	Screw connection
Conductor cross section solid min.	0.2 mm <sup>2</sup>
Conductor cross section solid max.	10 mm <sup>2</sup>
Conductor cross section flexible min.	0.2 mm <sup>2</sup>
Conductor cross section flexible max.	6 mm <sup>2</sup>
Conductor cross section AWG min.	24
Conductor cross section AWG max.	8
Conductor cross section flexible, with ferrule without plastic sleeve min.	0.25 mm <sup>2</sup>
Conductor cross section flexible, with ferrule without plastic sleeve max.	6 mm <sup>2</sup>
Conductor cross section flexible, with ferrule with plastic sleeve min.	0.25 mm <sup>2</sup>
Conductor cross section flexible, with ferrule with plastic sleeve max.	6 mm <sup>2</sup>
2 conductors with same cross section, solid min.	0.2 mm <sup>2</sup>
2 conductors with same cross section, solid max.	4 mm <sup>2</sup>
2 conductors with same cross section, stranded min.	0.2 mm <sup>2</sup>
2 conductors with same cross section, stranded max.	4 mm <sup>2</sup>
2 conductors with same cross section, stranded, ferrules without plastic sleeve, min.	0.25 mm <sup>2</sup>
2 conductors with same cross section, stranded, ferrules without plastic sleeve, max.	2.5 mm <sup>2</sup>
2 conductors with same cross section, stranded, TWIN ferrules with plastic sleeve, min.	0.5 mm <sup>2</sup>
2 conductors with same cross section, stranded, TWIN ferrules with plastic sleeve, max.	4 mm <sup>2</sup>
Stripping length	9 mm
Internal cylindrical gage	A5
Screw thread	M4
Tightening torque, min	1.5 Nm
Tightening torque max	1.8 Nm
Connection side	Inside
Connection method	Solder connection

### Standards and Regulations

Connection in acc. with standard	CSA
	IEC 60947-7-1

# Panel feed-through terminal block - VDFK 6 - 0711027

## Technical data

### Standards and Regulations

Flammability rating according to UL 94	V0
--	----

## Classifications

### eCl@ss

eCl@ss 4.0	27141131
eCl@ss 4.1	27141131
eCl@ss 5.0	27141134
eCl@ss 5.1	27141134
eCl@ss 6.0	27141134
eCl@ss 7.0	27141134
eCl@ss 8.0	27141134

### ETIM

ETIM 2.0	EC001283
ETIM 3.0	EC001283
ETIM 4.0	EC001283
ETIM 5.0	EC001283

### UNSPSC

UNSPSC 6.01	30211811
UNSPSC 7.0901	39121410
UNSPSC 11	39121410
UNSPSC 12.01	39121410
UNSPSC 13.2	39121410

## Approvals

### Approvals

---

#### Approvals

CSA / UL Recognized / KEMA-KEUR / cUL Recognized / PRS / IECCE CB Scheme / EAC / cULus Recognized

---

#### Ex Approvals

---

#### Approvals submitted

---

#### Approval details

# Panel feed-through terminal block - VDFK 6 - 0711027

## Approvals

CSA

	B	C	D
mm <sup>2</sup> /AWG/kcmil	26-8	26-8	26-8
Nominal current I <sub>N</sub>	50 A	50 A	10 A
Nominal voltage U <sub>N</sub>	300 V	150 V	300 V

UL Recognized

	B	C	D
mm <sup>2</sup> /AWG/kcmil	26-8	26-8	26-8
Nominal current I <sub>N</sub>	50 A	50 A	10 A
Nominal voltage U <sub>N</sub>	300 V	150 V	300 V

KEMA-KEUR

mm <sup>2</sup> /AWG/kcmil	6
Nominal current I <sub>N</sub>	41 A
Nominal voltage U <sub>N</sub>	500 V

cUL Recognized

	B	C	D
mm <sup>2</sup> /AWG/kcmil	26-8	26-8	26-8
Nominal current I <sub>N</sub>	50 A	50 A	10 A
Nominal voltage U <sub>N</sub>	300 V	150 V	300 V

PRS


IECEE CB Scheme

mm <sup>2</sup> /AWG/kcmil	6
Nominal current I <sub>N</sub>	41 A
Nominal voltage U <sub>N</sub>	500 V

# Panel feed-through terminal block - VDFK 6 - 0711027

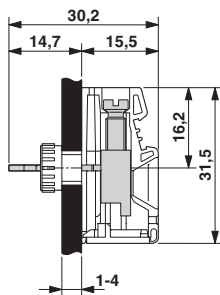
## Approvals

EAC

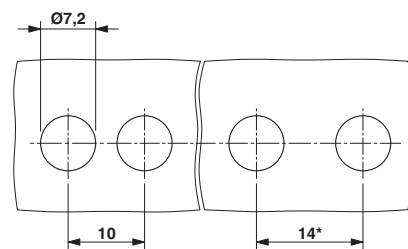
cULus Recognized  US

## Drawings

Dimensional drawing



Dimensional drawing



\* Dimensions when using the DP-VDFK 6/4 spacer plate

Phoenix Contact 2016 © - all rights reserved  
<http://www.phoenixcontact.com>

PHOENIX CONTACT GmbH & Co. KG  
Flachsmarktstr. 8  
32825 Blomberg  
Germany  
Tel. +49 5235 300  
Fax +49 5235 3 41200  
<http://www.phoenixcontact.com>



Below is a list of articles with direct links to our shop Electric Automation Network where you can see:

- Quote per purchase volume in real time.
- Online documentation and datasheets of all products.
- Estimated delivery time enquiry in real time.
- Logistics systems for the shipment of materials almost anywhere in the world.
- Purchasing management, order record and tracking of shipments.

To access the product, [click on the green button.](#)

Product	Code	Reference	Product link
Panel feed-through terminal block, Connection method: Screw connection, Solder connection, Load current : 57 A, Cross section: 0.2 mm <sup>2</sup> - 10 mm <sup>2</sup> , AWG 24 - 8, Connection direction of the conductor to plug-in direction: 0 °, Width: 10 mm, Color: gray	0711027	VDFK 6	<a href="#">Buy on EAN</a>