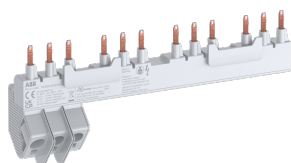


PRODUCT-DETAILS

PS1-4-1-65K

PS1-4-1-65K Busbar



General Information

Extended Product Type	PS1-4-1-65K
Product ID	1SAM301903R1014
EAN	4013614562976
Catalog Description	PS1-4-1-65K Busbar
Long Description	PS1-4-1-65K 3-phase busbar enables an easy and fast parallel connection of 4x MS132-K manual motor starters + 1 lateral aux.contact without the need of any tools by simply pushing the busbar into the terminals. The feeder block is intergated into the busbar, optimizing logistics and planning by reducing the amount of needed parts. The rated current is 65 A. PS1-K busbars are certified for UL Type E and Type F applications.

Ordering

Minimum Order Quantity	1 piece
Customs Tariff Number	85369010

Popular Downloads

Data Sheet, Technical Information	1SBC100214C0202
Instructions and Manuals	2CDC131120M6801
Installation Video	9AKK108466A6165 9AKK108466A6166
Marketing Video	9AKK107991A4712 2CDC131153V0201

Dimensions

Product Net Width	204.1 mm
Product Net Height	84.8 mm
Product Net Depth / Length	48.4 mm
Product Net Weight	0.15 kg

Technical

Rated Operational Voltage	690 V AC 250 V DC
Rated Operational Current (I _e)	65 A
Rated Impulse Withstand Voltage (U _{imp})	6 kV
Rated Short-time Withstand Current Low Voltage (I _{cw})	100 kA
Number of Mountable Devices	4
Number of Lateral Auxiliary Contacts	1
Number of Phases	3
Number of Poles	3
Degree of Protection	IP20
Pollution Degree	3
Connection Type	Pin
Connecting Capacity Main Circuit	Flexible with Ferrule Spring 1x 0.5 ... 16 mm ² Flexible with Ferrule Push-in 1x 4 ... 16 mm ² Flexible with Insulated Ferrule Spring 1x 0.5 ... 16 mm ² Flexible with Insulated Ferrule Push-in 1x 4 ... 16 mm ² Flexible Spring 1x 0.5 ... 16 mm ² Solid Spring 1x 0.5 ... 16 mm ² Solid Push-in 1x 4 ... 16 mm ² Stranded Spring 1x 1.5 ... 25 mm ² Stranded Push-in 1x 6 ... 25 mm ²
Wire Stripping Length	Main Circuit 16 mm
Recommended Screw Driver	Main Circuit 4
Standards	IEC/EN 60947-1 IEC/EN 60947-4-1 UL 60947-1 UL 60947-4-1
Product Name	Busbar
Suitable For	MS132-K MS132-KT MS132-KB
Suitable for Product Class	Manual Motor Starters
Accessory Group	Electrical
Accessory Type	3-Phase Busbar

Technical UL/CSA

Maximum Operating Voltage UL/CSA	Main Circuit 600 V AC
Ampere Rating UL/CSA	65 A
Connecting Capacity Main Circuit UL/CSA	Stranded Spring 1x 18-4 AWG Stranded Push-in 1x 8-4 AWG

Environmental

Ambient Air Temperature	Operation -25 ... +70 °C Storage -50 ... +80 °C
RoHS Status	Following EU Directive 2011/65/EU and Amendment 2015/863 July 22, 2019

Certificates and Declarations (Document Number)

Declaration of Conformity - CE	1SAD938515-0056 1SAD938508-0197 1SAD938519-0125 1SAD938510-0188 1SAD938523-0060
Declaration of Conformity - UKCA	1SAD938502-1056 1SAD938502-1060 1SAD938503-1125 1SAD938503-1188 1SAD938503-1197
Instructions and Manuals	2CDC131120M6801
RoHS Information	1SAD938513-0056

Container Information

Package Level 1 Width	84 mm
Package Level 1 Depth / Length	260 mm
Package Level 1 Height	61 mm
Package Level 1 Gross Weight	0.208 kg
Package Level 1 EAN	4013614562976
Package Level 1 Units	box 1 piece

Classifications

Object Classification Code	W
ETIM 5	EC000215 - Phase busbar
ETIM 6	EC000215 - Phase busbar
ETIM 7	EC000215 - Phase busbar
eClass	V11.0 : 27371306
UNSPSC	39121117
IDEA Granular Category Code (IGCC)	4378 >> Phase busbar

Accessories

Identifier	Description	Type	Quantity	Unit Of Measure
1SAM301904R1001	BS1-K Protection Cover	BS1-K	1	piece

Categories

Low Voltage Products and Systems → Control Products → Manual Motor Starters → Manual Motor Starters Accessories

