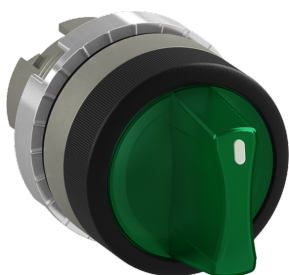


## PRODUCT-DETAILS

**P9MSLZ1V****SELECTOR SWITCH P9MSLZ1V****General Information**

Extended Product Type	P9MSLZ1V
Product ID	1SFA184612R9102
EAN	7320500522301
Catalog Description	SELECTOR SWITCH P9MSLZ1V
Long Description	SELECTOR SWITCH 3-POS ILLUMINATED SHORT HANDLE GREEN MAINTAINED/MOMENTARY

**Ordering**

EAN	7320500522301
Minimum Order Quantity	10 piece
Customs Tariff Number	8536501990

**Dimensions**

Product Net Width	29.7 mm
Product Net Height	44.5 mm
Product Net Depth / Length	80.7 mm
Product Net Weight	0.055 kg

**Container Information**

Package Level 1 Units	box 1 piece
Package Level 1 Width	41 mm
Package Level 1 Height	41 mm
Package Level 1 Depth / Length	80 mm
Package Level 1 Gross Weight	0.055 kg
Package Level 1 EAN	7320500519738
Package Level 2 Units	box 10 piece
Package Level 2 Width	90 mm
Package Level 2 Height	85 mm
Package Level 2 Depth / Length	220 mm

## Environmental

RoHS Status	Following EU Directive 2015/863 July 22, 2019 (RoHS 3)
-------------	--

## Additional Information

Actuator Type	Short handle
Bezel Material	Satin Chrome Metal
Color	Green
Degree of Protection	Front IP66
Function	Maintained/Momentary
Illumination	Illuminated
Maintained Positions	B, C
Product Main Type	P9MS
Product Name	Selector Switch
Spring Return From	A to B
Sub-Function	3-position
Sub-Function 2	CAM Z

## Certificates and Declarations (Document Number)

BV Certificate	2CMT2019-005867
CB Certificate	2CMT2019-005872
CCC Certificate	2CMT2019-005869
CSA Certificate	2CMT2019-005868
Data Sheet, Technical Information	1SFC151007C02__
Declaration of Conformity - CE	2CMT2019-005862
DNV GL Certificate	2CMT2019-005876
Instructions and Manuals	1SFC151011M0201
RINA Certificate	2CMT2019-005866
RoHS Information	2CMT2019-005862
UL Certificate	2CMT2019-005868

## Classifications

ETIM 7	EC000222 - Front element for selector switch
WEEE Category	5. Small Equipment (No External Dimension More Than 50 cm)

---

## Categories

---

Low Voltage Products and Systems → Control Products → Pilot Devices → Modular Metal Range P9M

