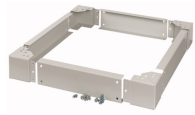


# DATASHEET - XLSPH1653



Plinth H=100mm, W=650mm, D=300mm, grey



**Part no.** XLSPH1653  
**Catalog No.** 174311

**EL-Nummer  
(Norway)** 2455687

## Technical data ETIM 7.0

Cabinet enclosures (EG000011) / Base/base element (switchgear cabinet) (EC000721)			
Electric engineering, automation, process control engineering / Electrical cabinet, housing, rack / Base/plinth (electrical cabinet) / Base/base element (enclosure) (ecl@ss10.0.1-27-18-20-03 [ACN612011])			
Model			Base complete
Material			Steel
Colour			Grey
Max. load capacity		kg	1500
Width		mm	505
Height		mm	110
Depth		mm	230
Suitable for enclosure building width		mm	650
Suitable for enclosure building depth		mm	300
Suitable for aeration/de-aeration			No
Suitable for outdoor set-up			No
Suitable for cable patch			No