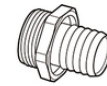
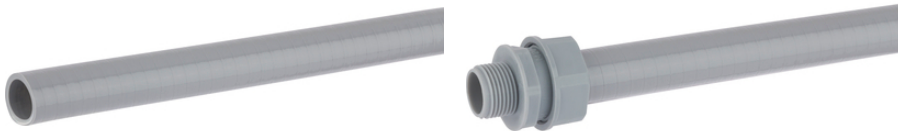
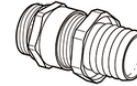


SILVYN® SP

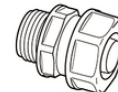
SILVYN® SP - grey PVC conduit



SILVYN® SSV/SSV-M + SCH
IP 54



SILVYN® SSVZ/SSVZ-M + SCH
IP 54



SILVYN® USK/USK-M
IP 54



SILVYN® SCH



Mechanical resistance



Waterproof

Benefits

- Protection against mechanical stress
- Protection against dust
- Protection against humidity

Application range

- Cable protection
- Additional insulation
- Bundling and guiding of cables and wires

Product features

- Flexible
- Dimensionally stable

Product Make-up

- Hard PVC inner spiral
- Soft PVC outer sheath

Technical Data

Classification ETIM 5:

ETIM 5.0 Class-ID: EC001177

ETIM 5.0 Class-Description: Protective plastic hose

Classification ETIM 6:

ETIM 6.0 Class-ID: EC001177

ETIM 6.0 Class-Description: Protective plastic hose

Last Update (10.01.2022)

©2022 Lapp Group - Technical changes reserved

Product Management www.lappkabel.de

You can find the current technical data in the corresponding data sheet.

PN 0456 / 02_03.16

SILVYN® SP

Certifications:	IEC EN 61386-23
Colour delivered:	Silver grey (RAL 7001)
Material:	Soft PVC with hard PVC spiral, SBR/NBR
Temperature range:	-15 °C to +60 °C

Note

Photographs and graphics are not to scale and do not represent detailed images of the respective products.
Prices are net prices without VAT and surcharges. Sale to business customers only.

SILVYN® SP

Article number	ID x OD mm	Bending radius (mm)	Suitable for SILVYN® SSV-M/SSVZ-M	Suitable for SILVYN® USK-M	Suitable for SILVYN® SSV/SSVZ	Suitable for SILVYN® USK	Suitable for SILVYN® SCH	PU ring (m)
SILVYN® SP								
61714000	10.0 x 14.0	50	16 x 1,5/1	12 x 1,5	9/1	9	10 - 16 S	25
61714010	12.0 x 16.0	60	16 x 1,5/2	16 x 1,5	9/2	11	12 - 20 S	25
61714020	14.0 x 18.0	70	20 x 1,5/1	-	11/1	13,5	12 - 20 S	25
61714100	16.0 x 20.0	70	20 x 1,5/2	20 x 1,5	11/2	16	16 - 25 S	25
61714110	22.0 x 27.0	90	25 x 1,5	25 x 1,5	16	21	20 - 32 S	25
61714120	30.0 x 36.0	140	32 x 1,5	32 x 1,5	29/1	29	25 - 40 S	25
61714070	38.0 x 44.0	190	40 x 1,5	40 x 1,5	36	36	32 - 50 S	25
61714090	49.0 x 56.0	250	63 x 1,5	50 x 1,5	48	48	40 - 60 S	25

Last Update (10.01.2022)

©2022 Lapp Group - Technical changes reserved

 Product Management www.lappkabel.de

You can find the current technical data in the corresponding data sheet.

PN 0456 / 02_03_16