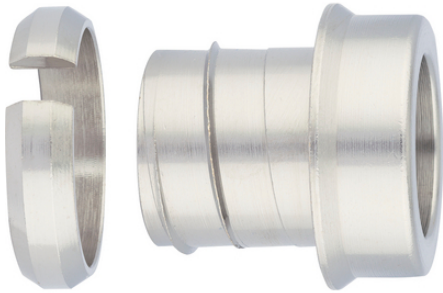


SILVYN® UI 511 Insert set

SILVYN® UI Insert Set - Insert set for SILVYN® UI 511

Info

Ensuring cables do not get damaged



Reliability



Temperature-resistant

Benefits

Cable damage can be prevented

Application range

Conduit end cover

If no conduit fitting is used

In combination with protective conduit:

SILVYN® UI 511

Product features

All-round collar completely covers the protective conduit end

Technical Data

Classification ETIM 5:

ETIM 5.0 Class-ID: EC000519

ETIM 5.0 Class-Description: Terminal sleeve for protective hose

Classification ETIM 6:

ETIM 6.0 Class-ID: EC000519

ETIM 6.0 Class-Description: Terminal sleeve for protective hose

Material:

Nickel-plated brass

Temperature range:

-55 °C to +260 °C

Note

Photographs and graphics are not to scale and do not represent detailed images of the respective products.

Prices are net prices without VAT and surcharges. Sale to business customers only.

Last Update (22.12.2022)

©2022 Lapp Group - Technical changes reserved

Product Management www.lappkabel.de

You can find the current technical data in the corresponding data sheet.

PN 0456 / 02_03.16

SILVYN® UI 511 Insert set

Article number	Nominal size	Suitable for SILVYN® UI 511	Pieces / PU
61798091	5/16"	5/16"	10
61798096	3/8"	3/8"	10
61798097	1/2"	1/2"	10
61798092	3/4"	3/4"	5
61798093	1"	1"	5
61798094	1 1/4"	1 1/4"	2
61798090	1 1/2"	1 1/2"	2
61798095	2"	2"	2

Last Update (22.12.2022)

©2022 Lapp Group - Technical changes reserved

Product Management www.lappkabel.deYou can find the current technical data in the corresponding data sheet.
PN 0456 / 02_03_16