

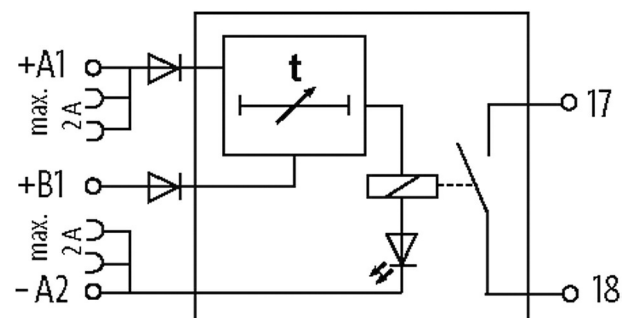
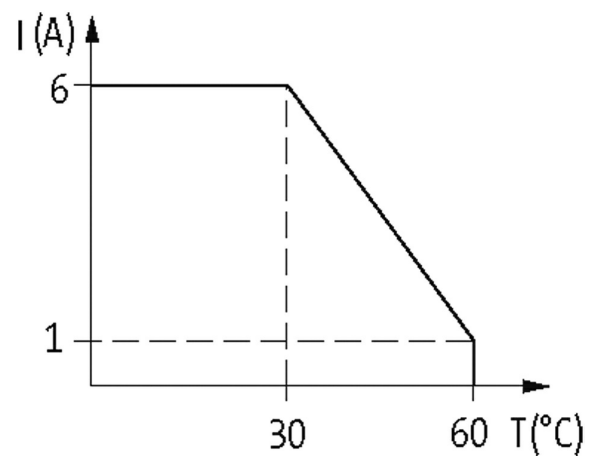
**MIRO MULTI TIMER 24VDC-1S**

MIRO 6.2 MULTI-TIMER 24VDC-1S

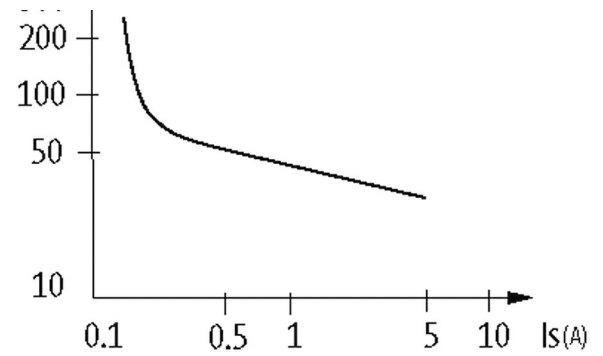
Relay output

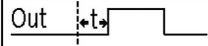
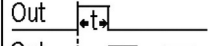
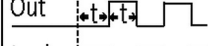
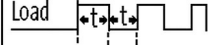

Impulse expansion: 0.1...300 s

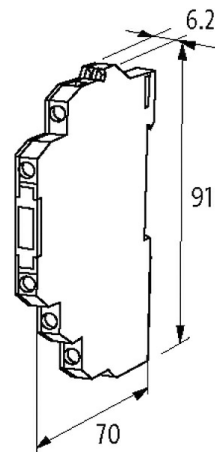
Screw terminals

[Link to Product](#)**Illustration**

Us (VDC) ↑  
300



| Time        | +A1   | Function                   |
|-------------|---|----------------------------|
| 0.1...1.2 s | Out         | Switch on delay            |
| 0.4...5 s   | Out         | One shot                   |
| 3.5...40 s  | Out         | Modulation, pause starting |
| 30...300 s  | Load        | Modulation, pulse starting |
|             | B1<br>Load  | Switch off delay time      |



Product may differ from Image

### Approvals



### General data

|                        |  |
|------------------------|--|
| Mech./ elect. life     | 20 000 000 switching cycles/load dependent |
| Test isolation voltage | 4 kV; safe separation (EN 60947-1)         |
| Mounting method        | DIN-rail mountable (EN 60715)              |
| Temperature range      | -25...+60 °C                               |
| Dimensions H×W×D       | 91×6.2×70 mm                               |

### Output

|                |                  |
|----------------|------------------|
| Output voltage | max. 250 V AC/DC |
|----------------|------------------|

|                                      |                    |
|--------------------------------------|--------------------|
| Output current                       | max. 6 A           |
| Min. load current                    | 100 mA (12 V DC)   |
| Output rating                        | max. 1500 VA/120 W |
| Switching frequency                  | max. 10 Hz         |
| Contact material                     | Ag Sn O2           |
| Energize/release/contact bounce time | 10/15/1.5 ms       |

**Input**

|                 |                            |
|-----------------|----------------------------|
| Input voltage   | 24 V DC (+10 -15%) input A |
| Input current   | 20 mA (input A)            |
| Control voltage | 24 V DC (+10 -15%) input B |
| Control current | 5 mA (input B)             |

**Commercial data**

|                       |               |
|-----------------------|---------------|
| country of origin     | CZ            |
| customs tariff number | 85364190      |
| EAN                   | 4048879026956 |
| eClass                | 27210990      |
| Packaging unit        | 1             |