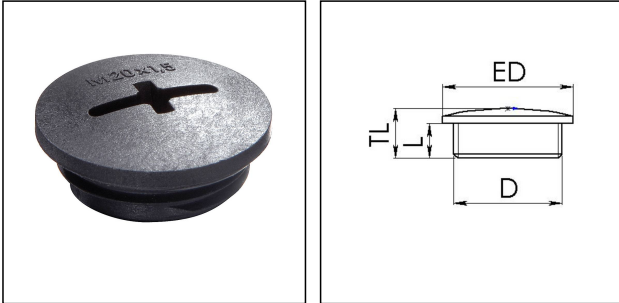


EVS 12

Stop end, polystyrene, RAL 9005, M12



Products may differ in size, colour and appearance to those shown. If you require further information or customisation, please contact us directly.



Material	Polystyrene, impact resistant
Temp. range min	-20 °C
Temp. range max	60 °C
Protection class	IP56
Advice	with sealing IP66/IP68
Thread type	M
Ø Connection thread D	12
Lead	1,5
Length screw-in thread L	6 mm
Total length TL	8 mm
External diameter ED	15 mm
Product Color	RAL 9005
Order no. RAL 9005	10062498
Type	EVS 12
Packing unit	100
ETIM-Classification	EC000032

Recommended accessories

EMUG 12	10061780
EADR 12	10062801

14.01.2021

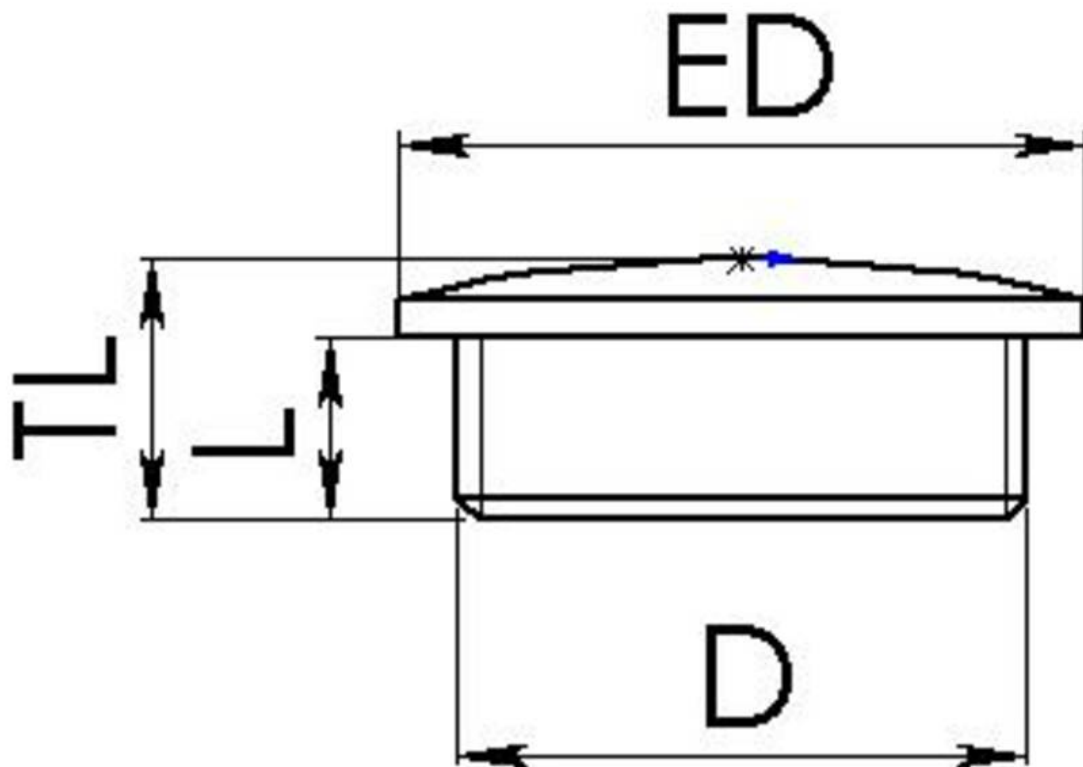
Your Contact:

WISKA Hoppmann GmbH

Kisdorfer Weg 28 · 24568 Kaltenkirchen · Germany

☎ +49-4191-508-0 · 📠 +49-4191-508-209

contact@wiska.de · www.wiska.com



Your Contact:

WISKA Hoppmann GmbH

Kisdorfer Weg 28 · 24568 Kaltenkirchen · Germany

☎ +49-4191-508-0 · 📠 +49-4191-508-209

contact@wiska.de · www.wiska.com