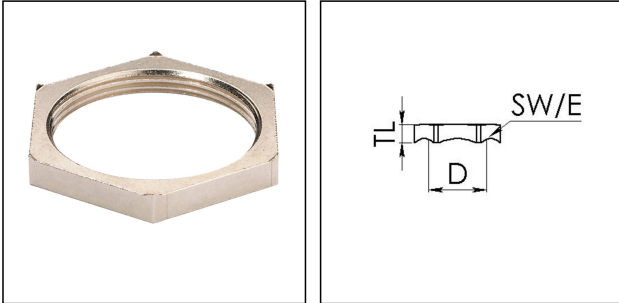


EMMU-EMV 20

EMC-locknut, brass nickel-plated, M20



Products may differ in size, colour and appearance to those shown. If you require further information or customisation, please contact us directly.



Material	Brass nickel-plated
Temp. range min	-250 °C
Temp. range max	500 °C
Thread type	M
Ø Connection thread D	20
Lead	1,5
Key width SW	24 mm
Collar diameter (E)	27 mm
Total length TL	4,7 mm
Surface	Nickel-plated
Order no. nickel-plated	10063212
Type	EMMU-EMV 20
Packing unit	100
ETIM-Classification	EC000940

14.01.2021

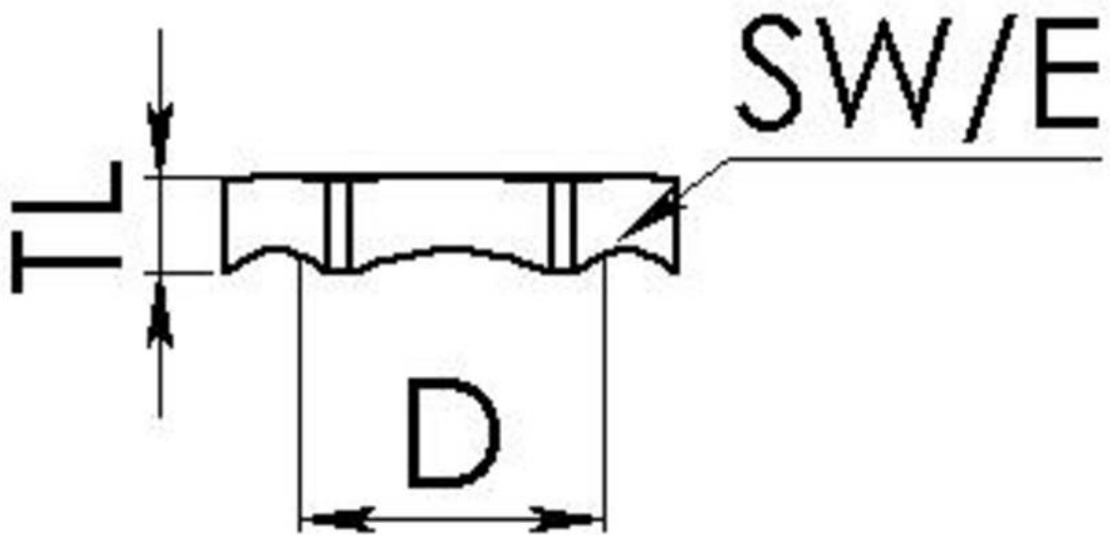
Your Contact:

WISKA Hoppmann GmbH

Kisdorfer Weg 28 · 24568 Kaltenkirchen · Germany

☎ +49-4191-508-0 · 📠 +49-4191-508-209

contact@wiska.de · www.wiska.com



Your Contact:

WISKA Hoppmann GmbH

Kisdorfer Weg 28 · 24568 Kaltenkirchen · Germany

☎ +49-4191-508-0 · 📠 +49-4191-508-209

contact@wiska.de · www.wiska.com