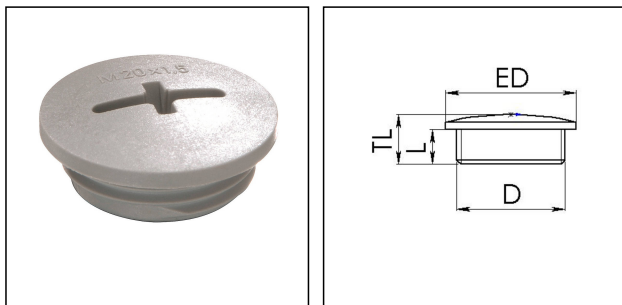


## EVS 20

Stop end, polystyrene, RAL 7001, M20



Products may differ in size, colour and appearance to those shown. If you require further information or customisation, please contact us directly.



<b>Material</b>	Polystyrene, impact resistant
<b>Temp. range min</b>	-20 °C
<b>Temp. range max</b>	60 °C
<b>Protection class</b>	IP56
<b>Advice</b>	with sealing IP66/IP68
<b>Thread type</b>	M
<b>Ø Connection thread D</b>	20
<b>Lead</b>	1,5
<b>Length screw-in thread L</b>	6 mm
<b>Total length TL</b>	9,5 mm
<b>External diameter ED</b>	24 mm
<b>Product Color</b>	RAL 7001
<b>Order no. RAL 7001</b>	10064660
<b>Type</b>	EVS 20
<b>Packing unit</b>	100
<b>ETIM-Classification</b>	EC000032

### Recommended accessories

<b>EMUG 20</b>	10062714
<b>EADR 20</b>	10062803

14.01.2021

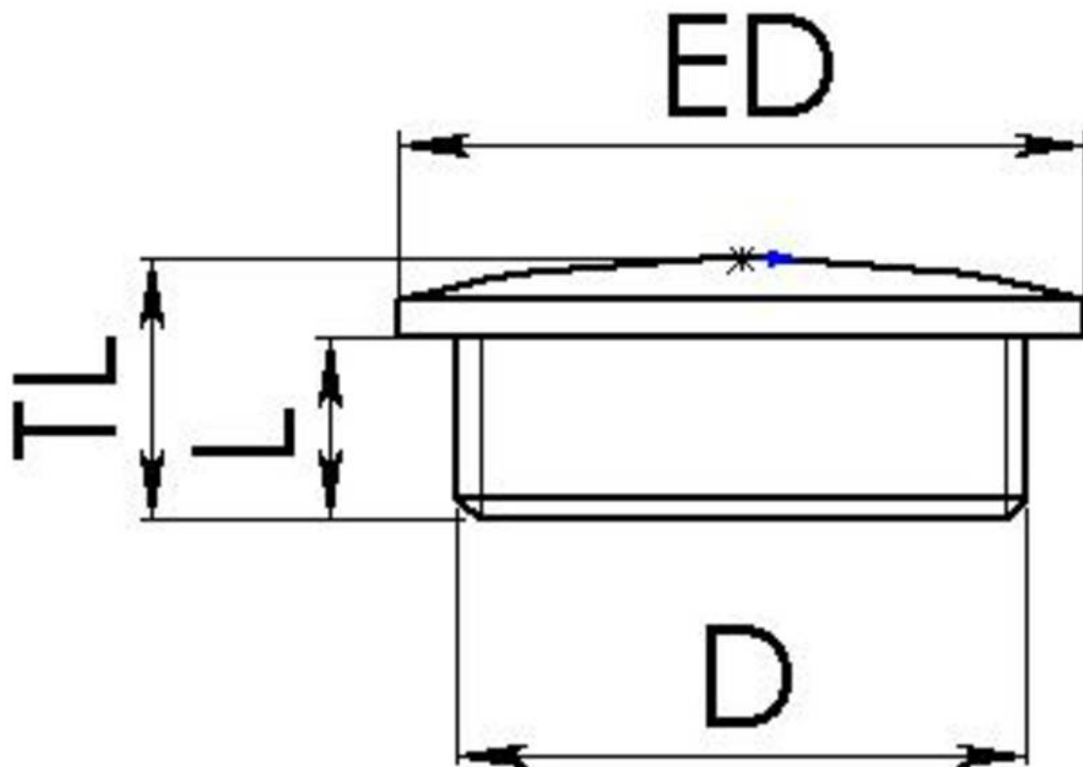
Your Contact:

**WISKA Hoppmann GmbH**

Kisdorfer Weg 28 · 24568 Kaltenkirchen · Germany

☎ +49-4191-508-0 · 📠 +49-4191-508-209

contact@wiska.de · www.wiska.com



Your Contact:

**WISKA Hoppmann GmbH**

Kisdorfer Weg 28 · 24568 Kaltenkirchen · Germany

☎ +49-4191-508-0 · 📠 +49-4191-508-209

contact@wiska.de · www.wiska.com