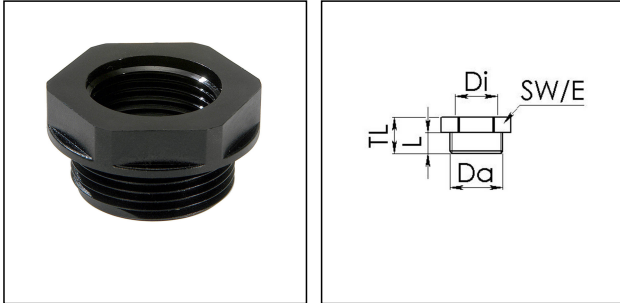


EX-KRM 63/40

Ex-reduction adaptor, polyamide, M63-M40



Products may differ in size, colour and appearance to those shown. If you require further information or customisation, please contact us directly.



Material	Polyamide, fibre reinforced
Material sealing gasket	EPDM
Temp. range min	-40 °C
Temp. range max	75 °C
Protection class	IP66 / IP68 (5 bar 30 min)
Type of protection	Ex eb, Ex tb
Ex-Certificate	IECEX, ATEX
Thread type outer	M
Ø outer thread	63
Lead outer	1,5
Length screw-in thread L	15 mm
Thread type inner	M
Ø inner thread	40
Lead inner	1,5
Key width SW	68 mm
Collar diameter (E)	75 mm
Total length TL	22 mm
Form	B
Product Color	RAL 9005
Equipment	Incl. connection thread gasket
Order no. RAL 9005	10064739
Type	EX-KRM 63/40
Packing unit	5
ETIM-Classification	EC000938

Your Contact:

WISKA Hoppmann GmbH

Kisdorfer Weg 28 · 24568 Kaltenkirchen · Germany

☎ +49-4191-508-0 · 📠 +49-4191-508-209

contact@wiska.de · www.wiska.com

Recommended accessories

EMUG 63

10061787

14.01.2021

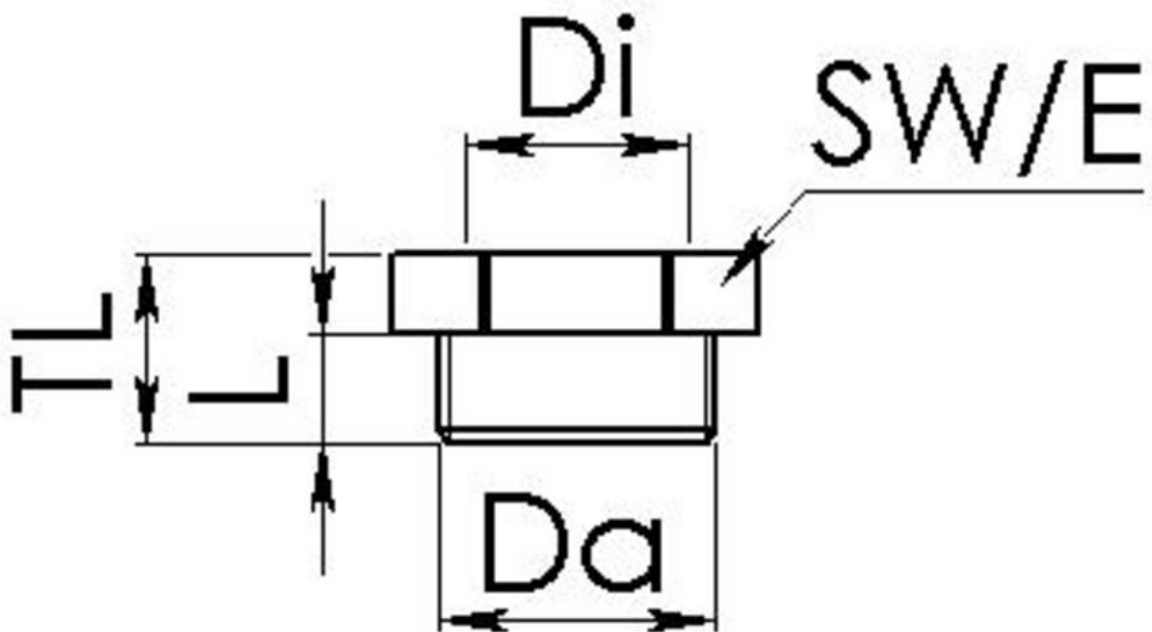
Your Contact:

WISKA Hoppmann GmbH

Kisdorfer Weg 28 · 24568 Kaltenkirchen · Germany

☎ +49-4191-508-0 · 📠 +49-4191-508-209

contact@wiska.de · www.wiska.com



Your Contact:

WISKA Hoppmann GmbH

Kisdorfer Weg 28 · 24568 Kaltenkirchen · Germany

☎ +49-4191-508-0 · 📠 +49-4191-508-209

contact@wiska.de · www.wiska.com